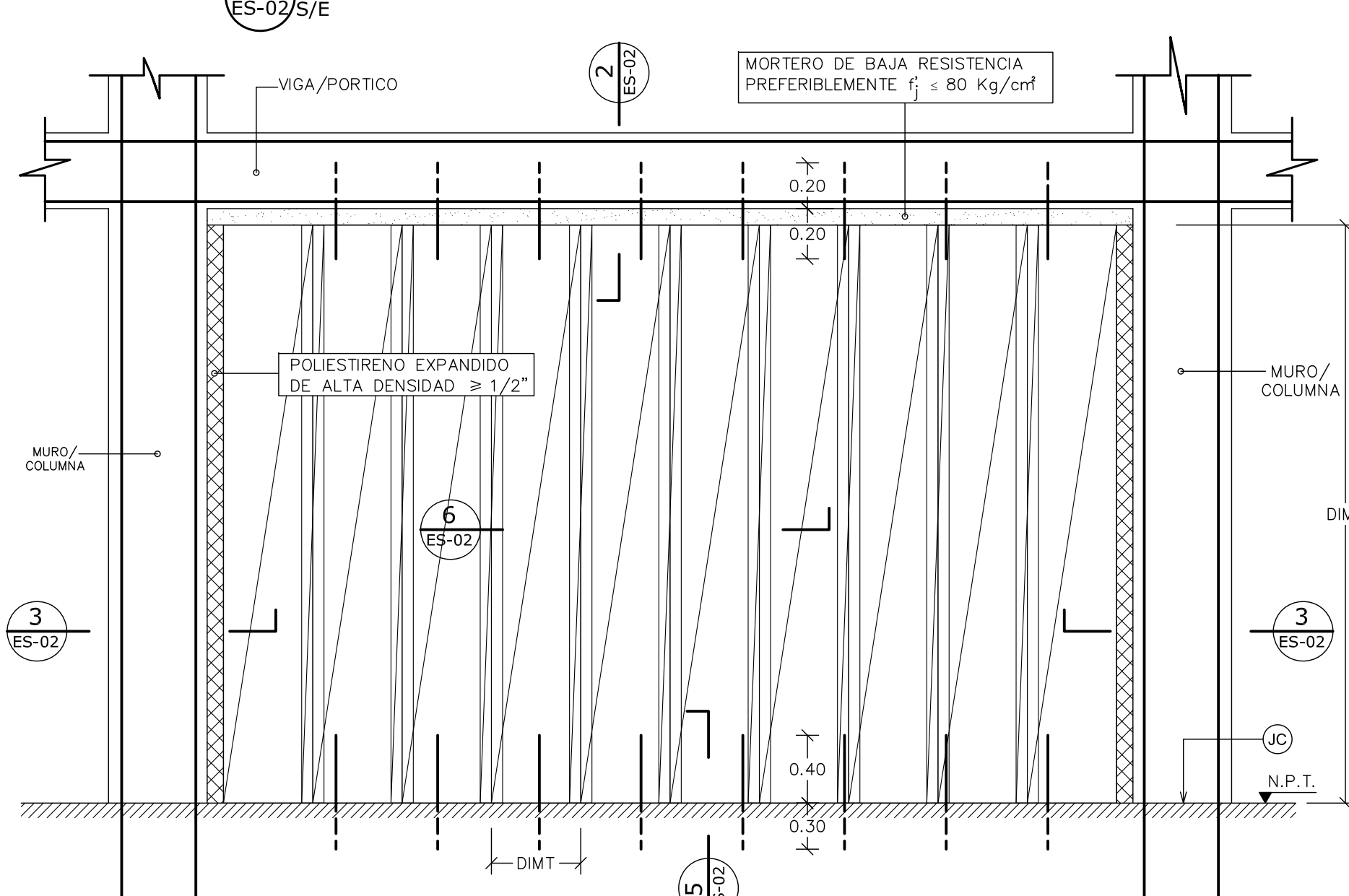


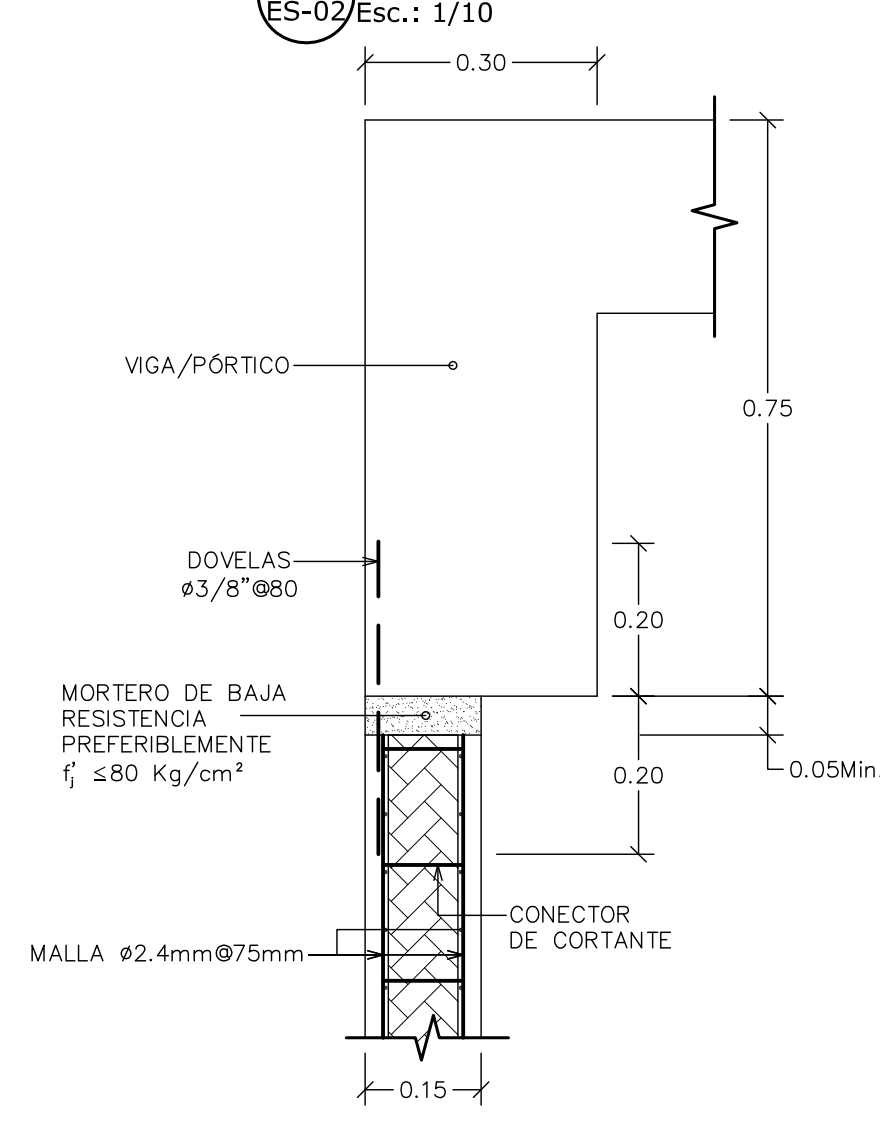
DETALLES PAREDES DE PANEL ALIGERADO

DETALLES PAREDES DE MAMPOSTERÍA

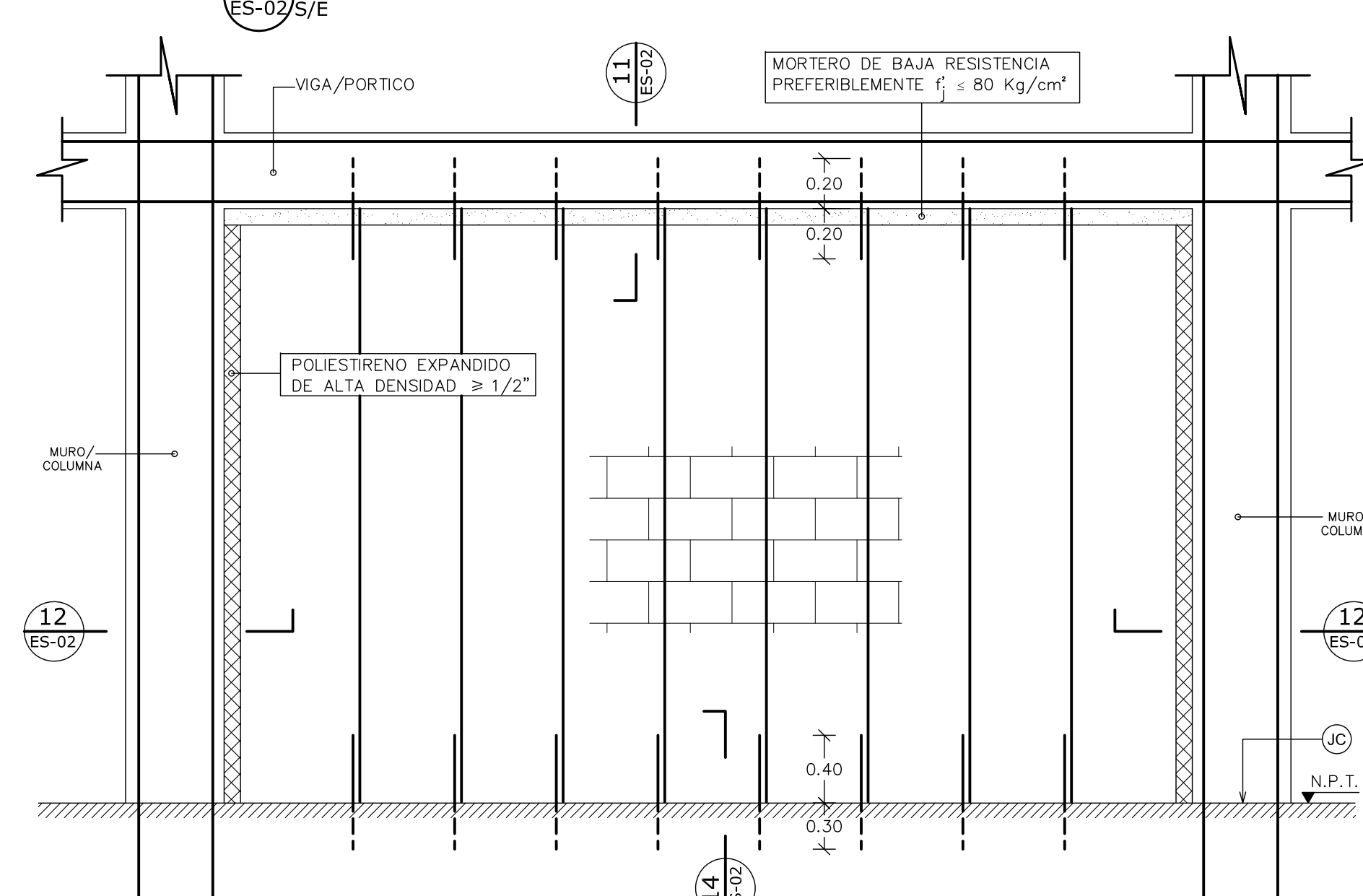
1 DETALLE UNIÓN PÓRTICO-PANEL ALIGERADO



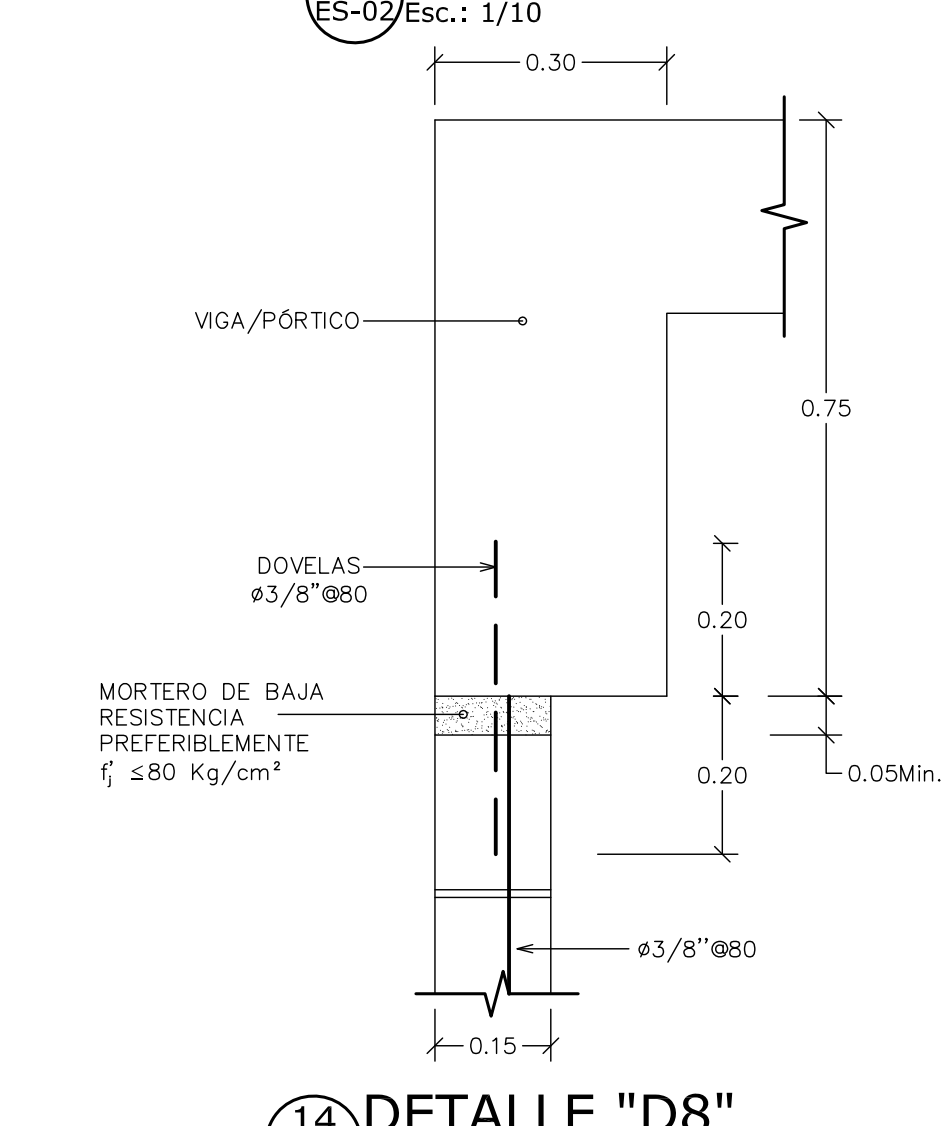
2 DETALLE "D1"



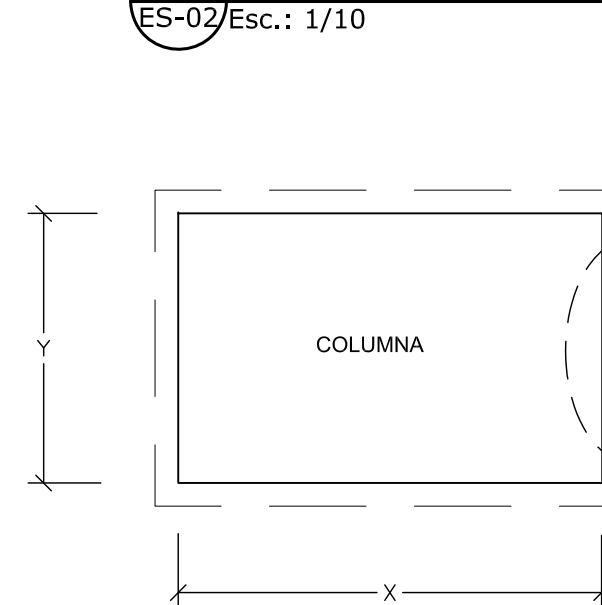
10 DETALLE UNIÓN PÓRTICO-MAMPOSTERÍA



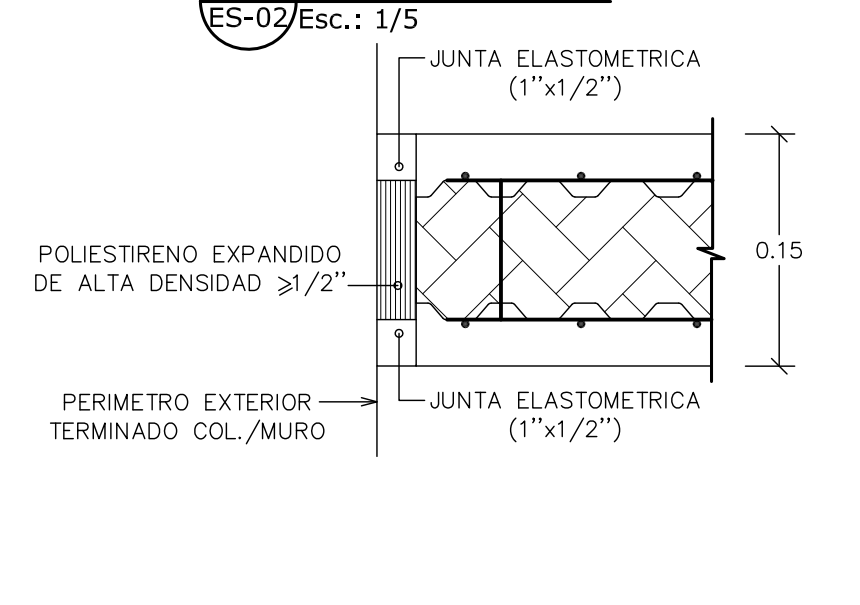
11 DETALLE "D6"



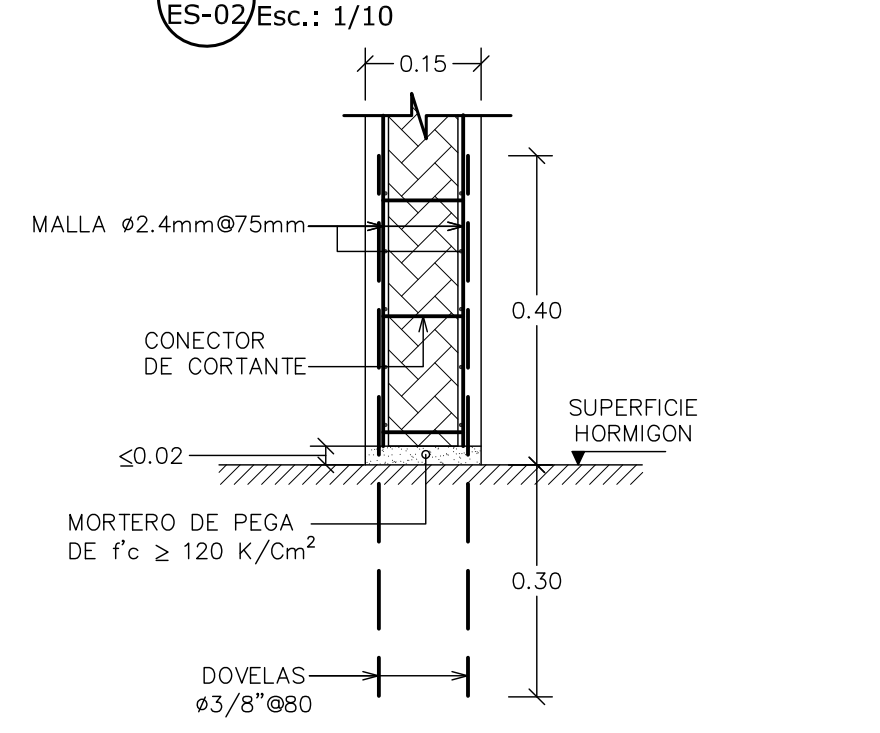
3 DETALLE "D2"



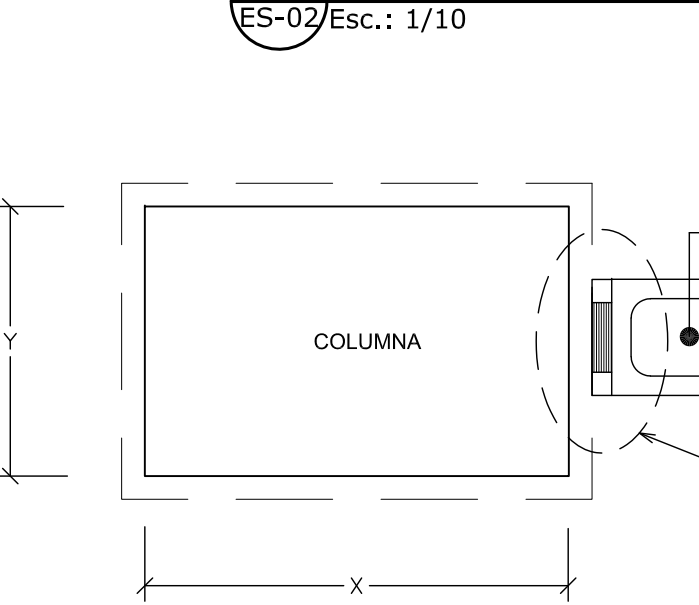
4 JE-SÍSMICA



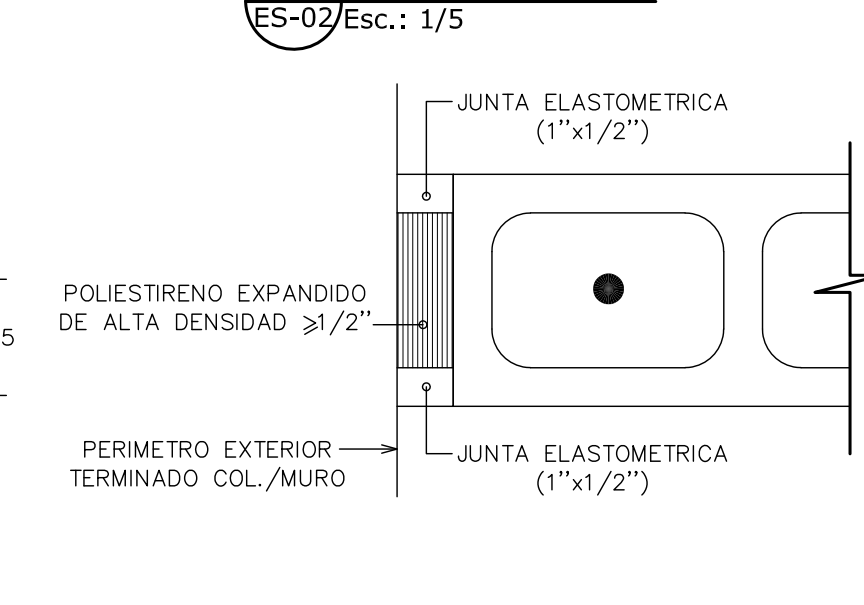
5 DETALLE "D3"



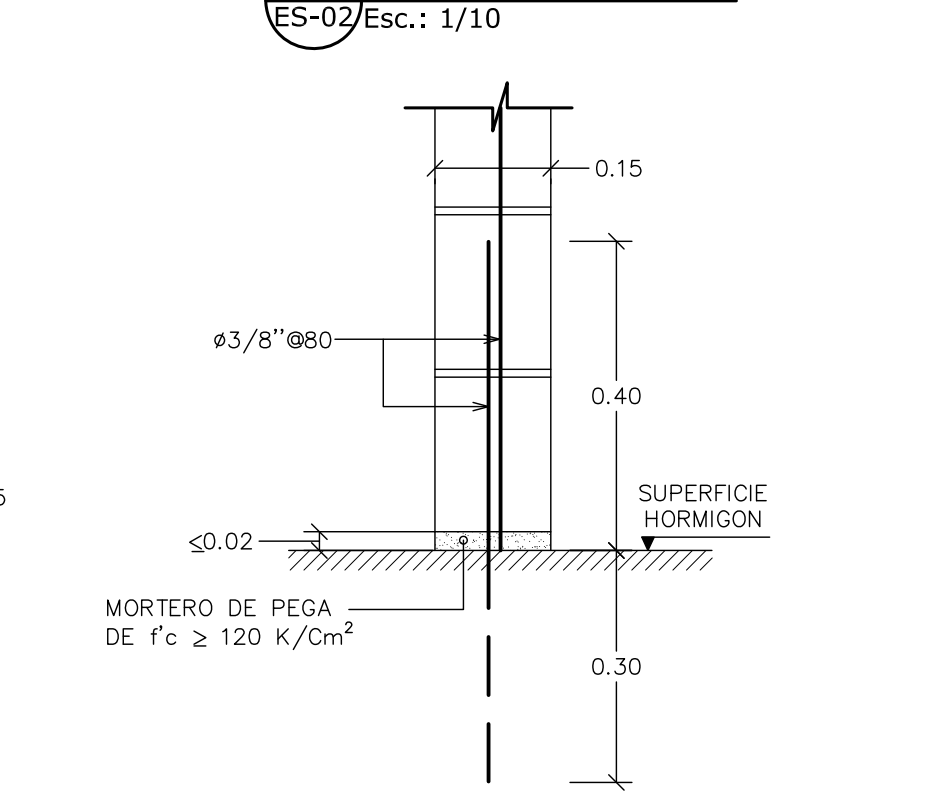
12 DETALLE "D7"



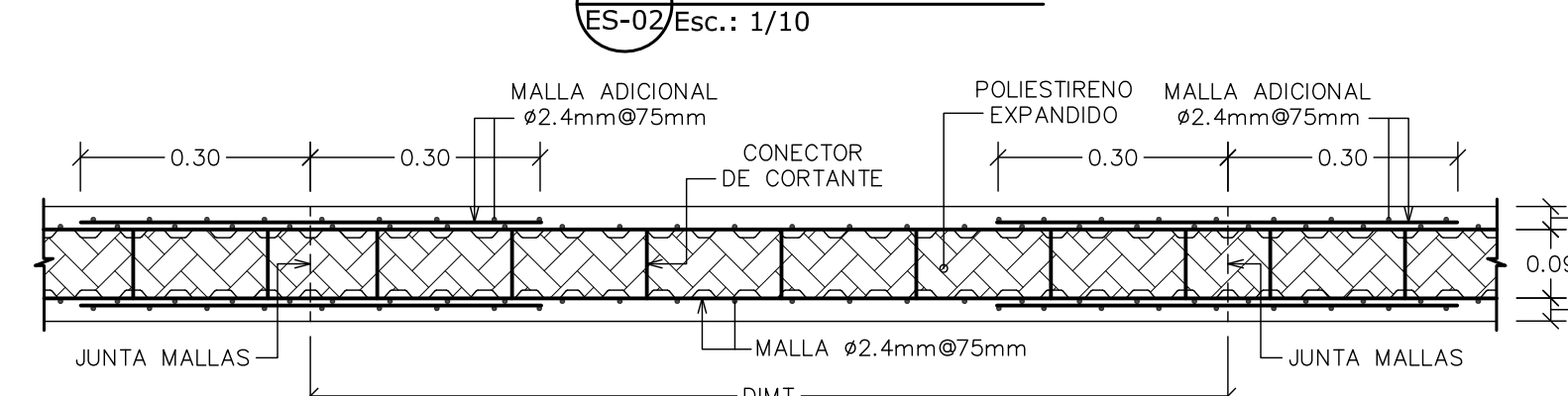
13 JE-SÍSMICA



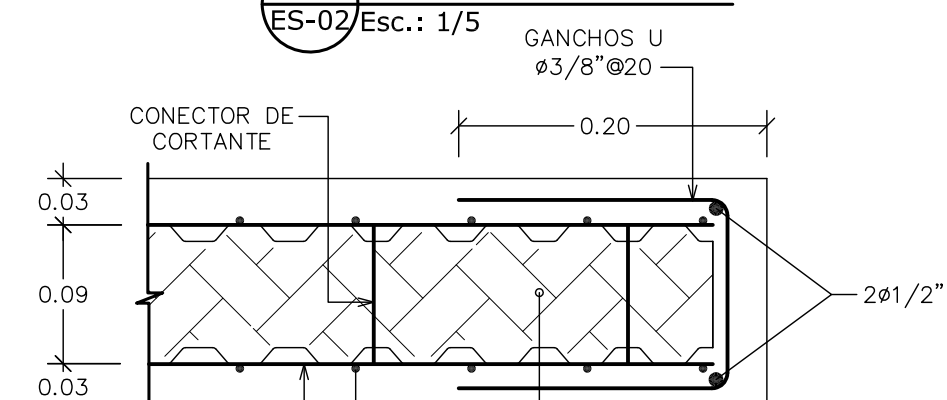
14 DETALLE "D8"



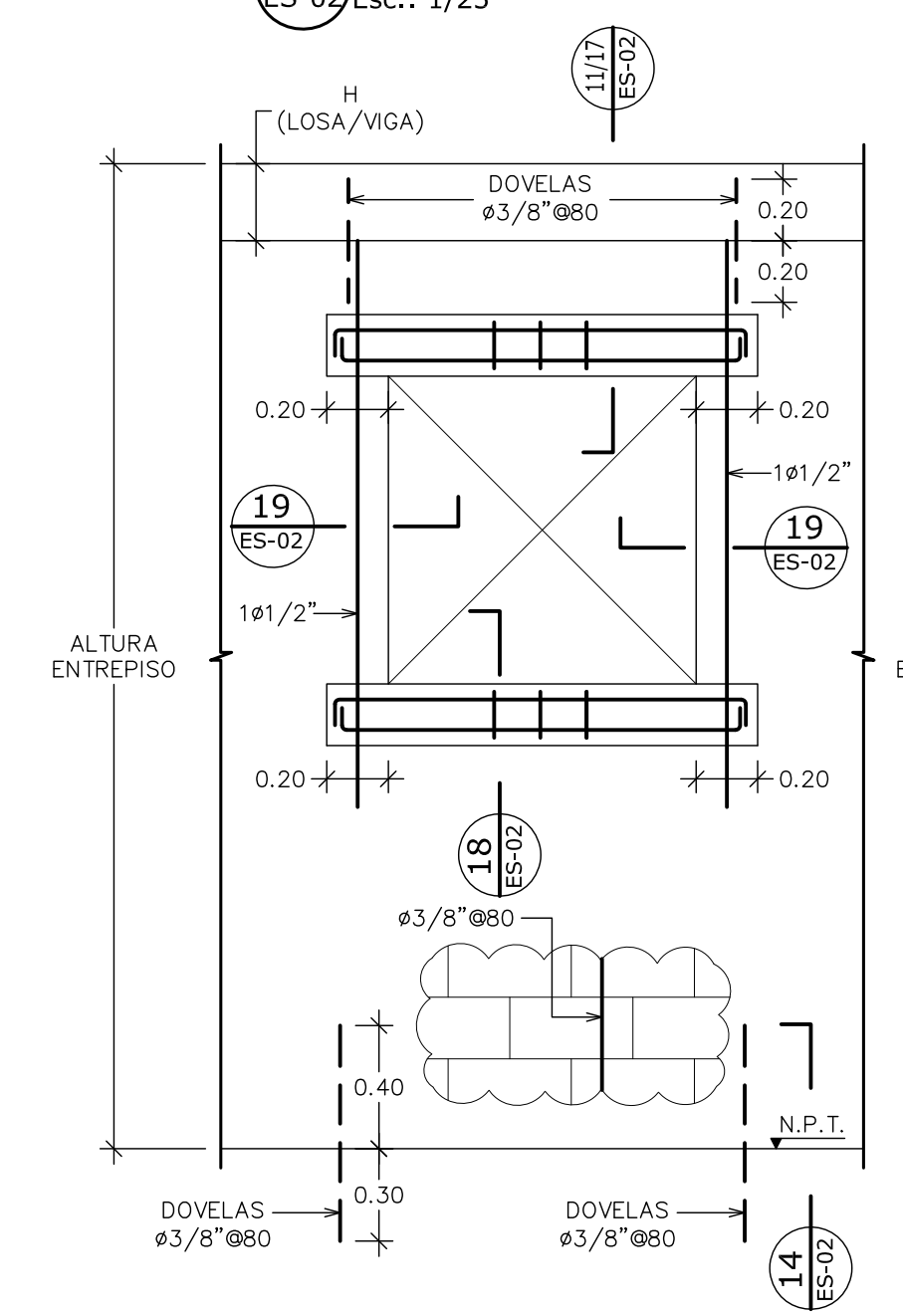
6 DETALLE "D4"



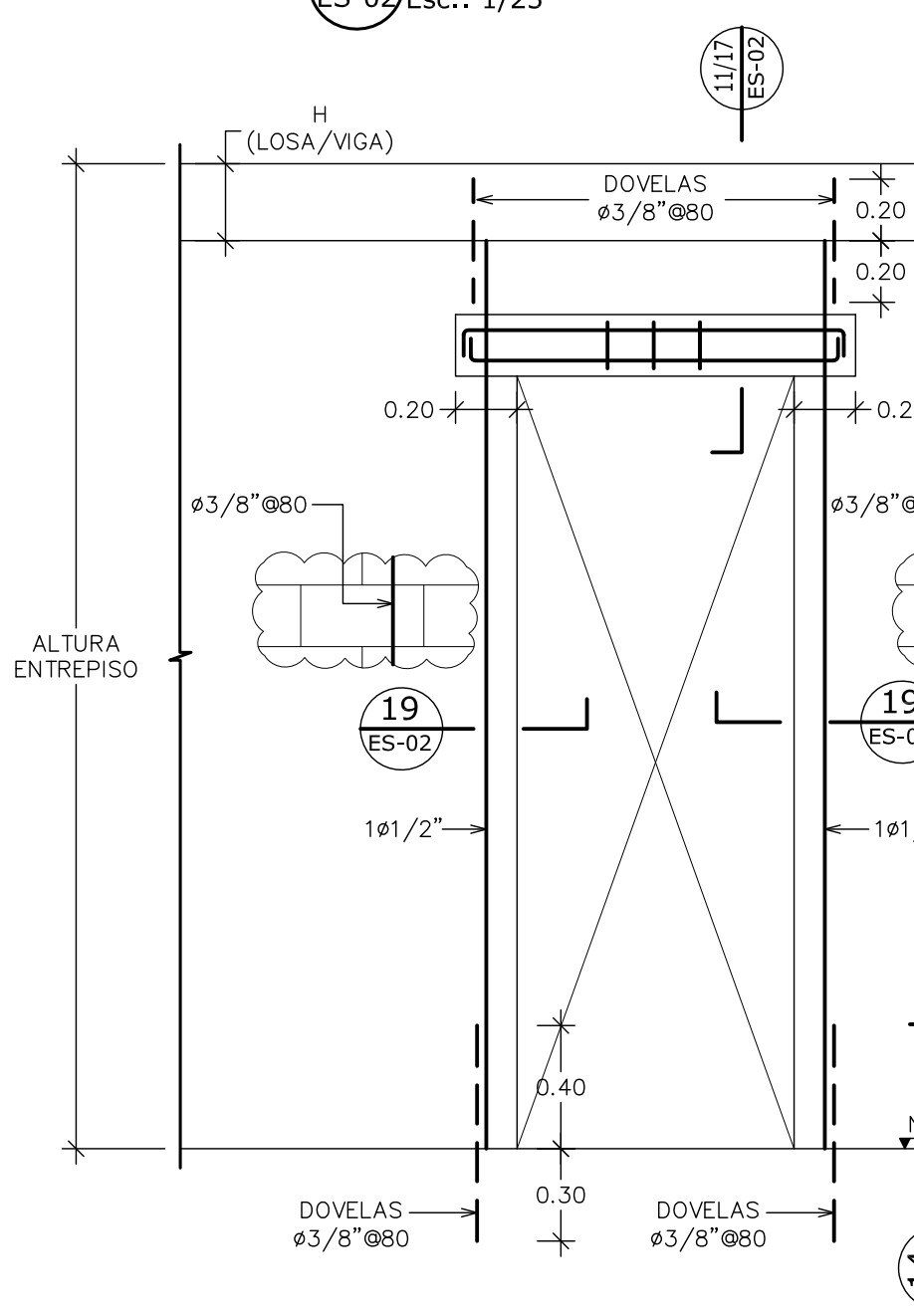
7 DETALLE "D5"



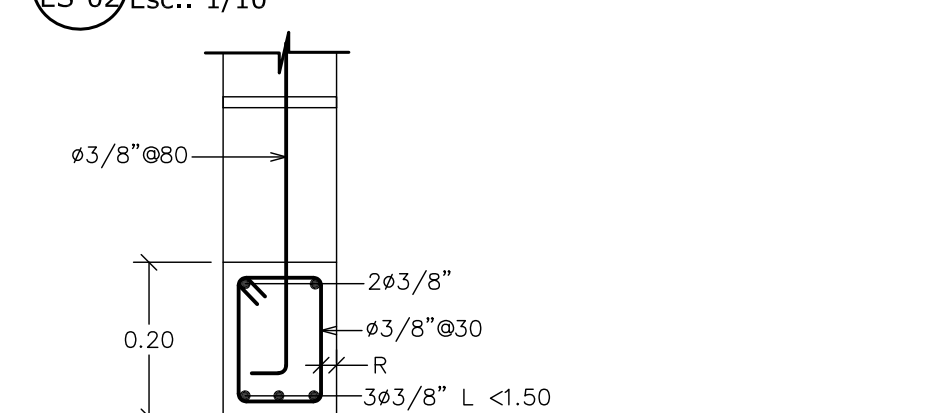
15 HUECO DE VENTANA



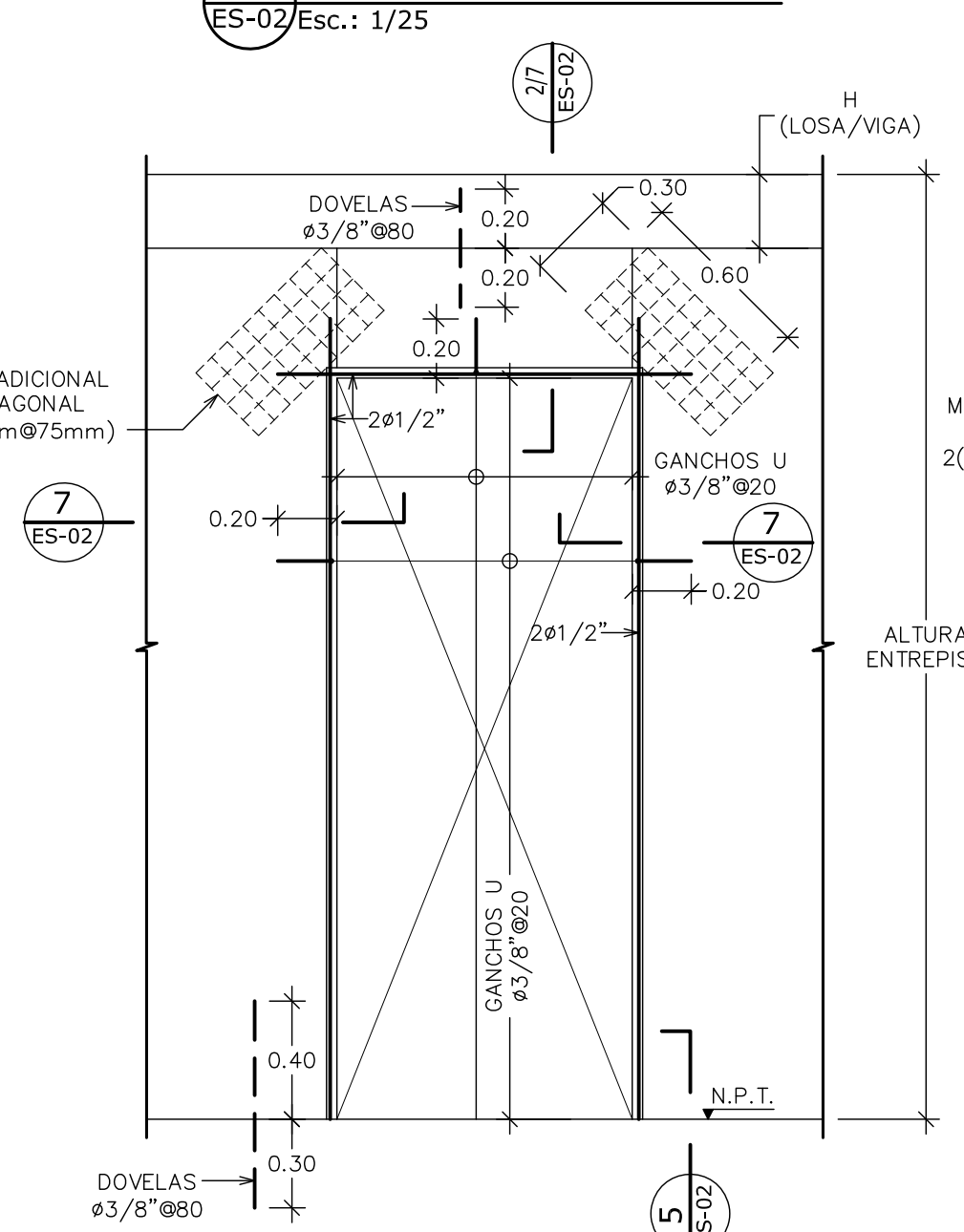
16 HUECO DE PUERTA



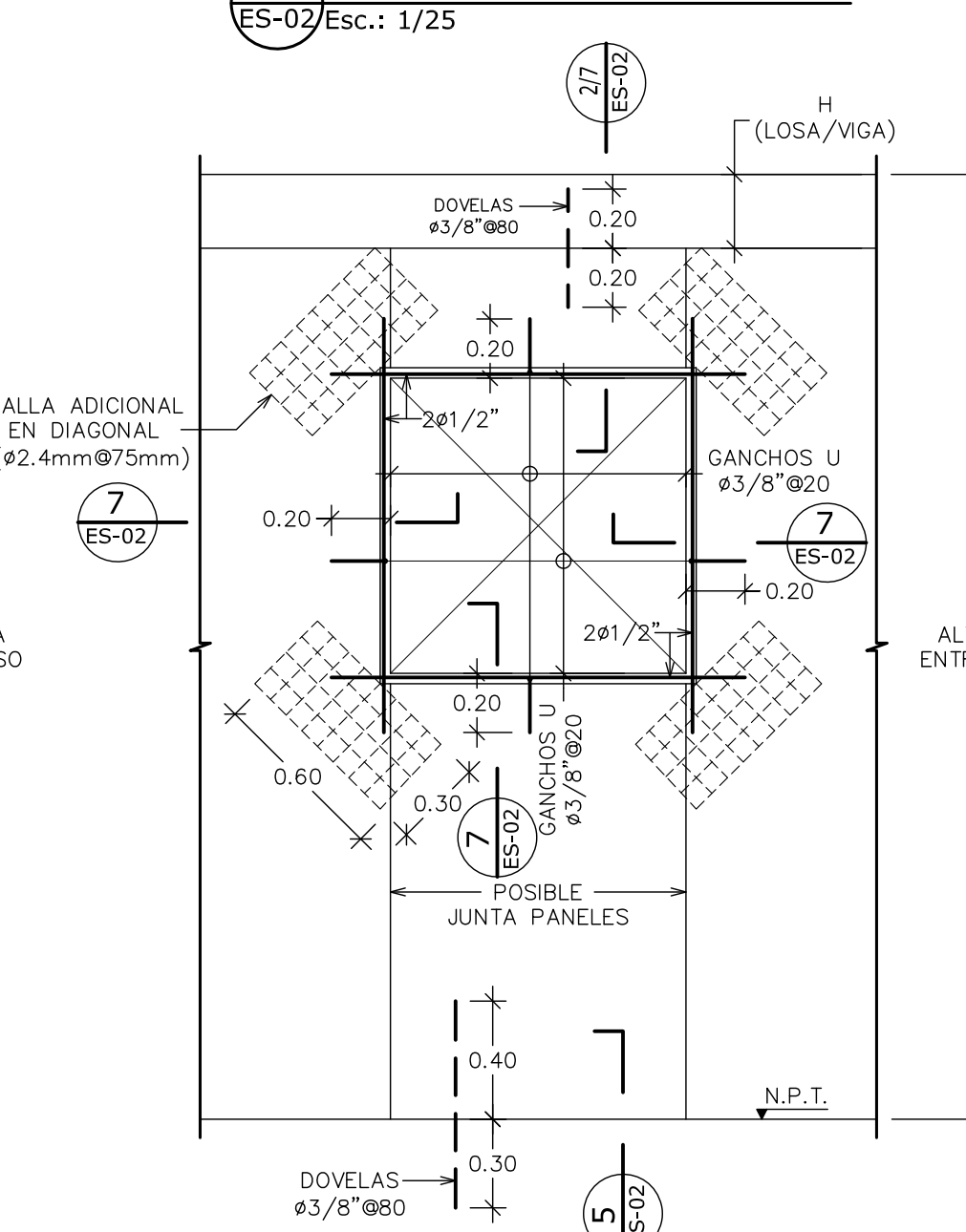
17 DETALLE "D9" [Di]



8 HUECO DE PUERTA



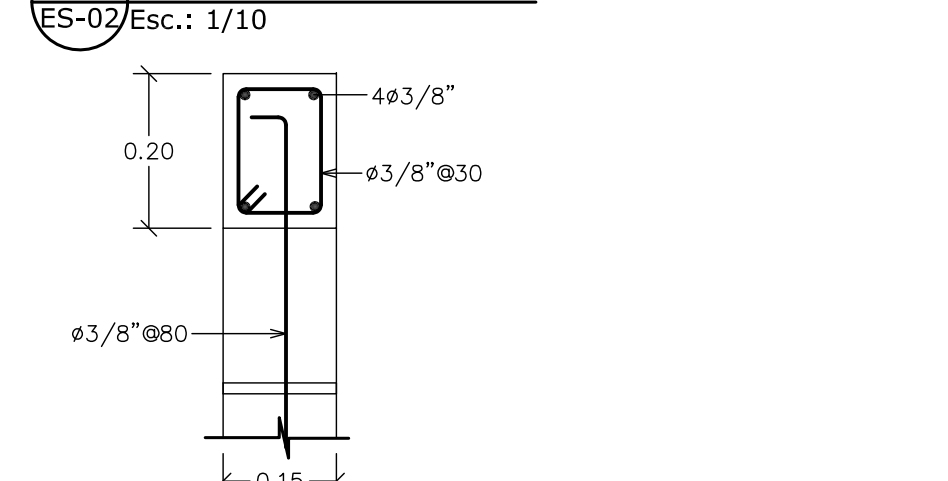
9 HUECO DE VENTANA



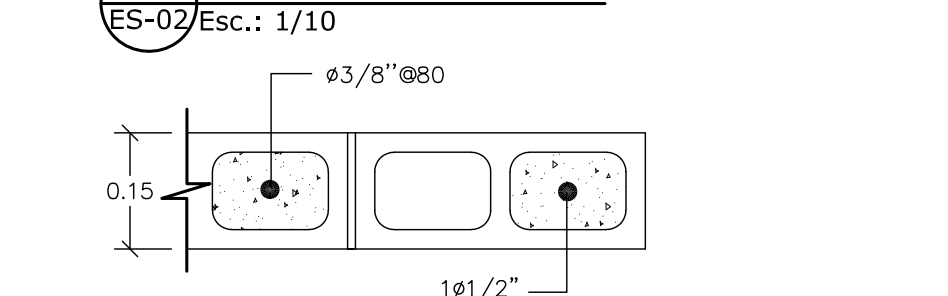
NOTAS

1. PARA CIERRE MAS EXTERIOR (FACHADA) SE UTILIZARÁ MAMPOSTERIA REFORZADA SEGUN DETALLE 1/ES-02.
2. PARA LAS DIVISIONES INTERIORES SE UTILIZARÁ PANELES ALIGERADOS DE POLIESTIRENO EXPANDIDO SEGUN DETALLE 10/ES-02.
3. LA UTILIZACIÓN DE LOS PANELES DE POLIESTIRENO COMO ELEMENTO DE FACHADA O CIERRE EXTERIOR, REQUERIRÁ DE UN CALIBRE ESPECIAL EN EL REFUERZO DE MALLAS SEGUN LA VELOCIDAD DE VIENTO DE DISEÑO (250 km/h). ESTE CAMBIO DEBERÁ SER APROBADO Y/O AUTORIZADO POR EL INGENIERO ESTRUCTURALISTA.

18 DETALLE "D10"



19 DETALLE "D11"



Proyecto:	Diseño Arquitectónico:	Diseño Estructural:	Revisión:	Fecha:
**	Arq. Francisco Rojas Codia **	Ing. Tania Tejada Codia: 3254	Rev. *	**/**
Propietario:	Colaboradores:	Diseño Eléctrico:		
**	**	Ing. ** Codia: **		
Firma Responsable:		Diseño Sanitario:		
**		Ing. ** Codia: **		